

YOUR LOVE, OUR SUPPORT



**Make a difference with our
Adult Family Care Program**



What Is Adult Family Care?

The Incompass Human Services Adult Family Care program, funded by MassHealth, offers compassionate and comprehensive support to individuals requiring specialized care within a nurturing home environment. This innovative program fosters a close-knit partnership between caregivers and participants, promoting independence and enhancing quality of life.

Through a person-centered approach, Incompass Human Services facilitates personalized care plans, skillful coordination of medical services, and invaluable emotional assistance, ensuring caregivers and individuals alike experience a dignified and fulfilling life journey while easing the burdens often associated with complex healthcare needs.

***Elevate Your Care,
Transform Your Life.***

“I wish we knew about AFC sooner. We've been caring for our grandson for years and never knew we could get support like this.”

- AFC Provider of 24-Year-Old Grandson



Why Choose AFC With Incompass?



Stipends for Caregivers

Care providers will receive **monthly tax-free payments** to alleviate the financial burdens associated with caregiving.



Dedicated Nursing Team

Our **multi-lingual nursing team** conducts regular home visits, ensuring the well-being and health of both caregivers and individuals receiving care.



24-Hour Support

AFC offers 24-hour assistance **via phone or email**, ensuring you have access to support, guidance, and peace of mind whenever you need it.



Nurturing Home Environment

Ensure that your family member or friend continues to reside in a familiar and nurturing environment **in the comfort of their own home.**

Eligibility Criteria

To receive support through our AFC program, individuals must meet the following criteria:



For Those Needing Care

- Must be at least 16 years of age
- Must be MassHealth eligible
- Must have a medical, physical, or developmental disability that prevents them from living independently and needs supervision or assistance with at least one basic task of everyday life (e.g., eating, bathing, etc.)



To receive support through our AFC program, individuals must meet the following criteria:



For Those Providing Care



- Must be at least 18 years of age
- Must live with the person needing care
- Can be any family member, or non-relative, **except for** legal guardians and spouses
- Must be able to meet the daily care needs of the program participant

“I decided to become a caregiver in my family setting. I’ve seen a lot of people who need a family. My goal is to make a person feel like part of a family.”

- Priscilla Roberts, AFC's first non-biological caregiver

What to Expect



1

Phone Interview

An Incompass Care Champion will walk you through the program and learn more about the caregiving needs in your home.

2

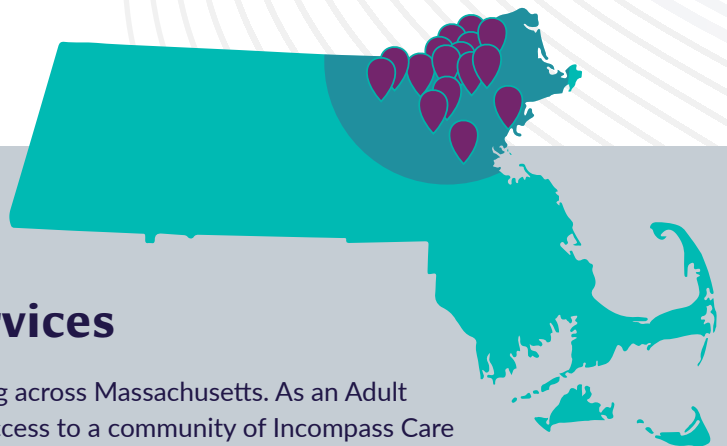
Determine Eligibility

Based on your unique needs, our Care Champions will determine your eligibility for financial incentives and caregiving resources as part of the AFC program.

3

In-House Consultation

A home visit is the final step in the application process, where a member of the AFC team and nursing team will visit you in your home.



Massachusetts Adult Family Care Services

Our adult family care services are expanding across Massachusetts. As an Adult Family Care (AFC) Provider, you will have access to a community of Incompass Care Champions to help guide you along your journey.

With You at Every Step

Commonly Asked Questions

1

How is the Adult Family Care program funded?

The Incompass AFC program is funded by MassHealth through the Executive Office of Elder Affairs. This program offers MassHealth-eligible individuals over the age of 16 the option to continue living at home with their families or with non-family members.

2

Can I apply to be a caregiver if I am not related?

Of course! Incompass AFC caregiver placements include several successful nonbiological matches.

3

If English is not my first language, will that interfere with receiving supports?

The Incompass AFC team is proudly multilingual. We encourage you to reach out in terms of any language barriers that may arise.



Ready to see if AFC is right for you?



Scan here to get started
incompasshs.org/afc-program

Our Care Champions are more than willing to answer your questions about the AFC Program. We encourage you to reach out to our program manager:



Shola Ojudun
978-349-3023
afcprogram@incompasshs.org